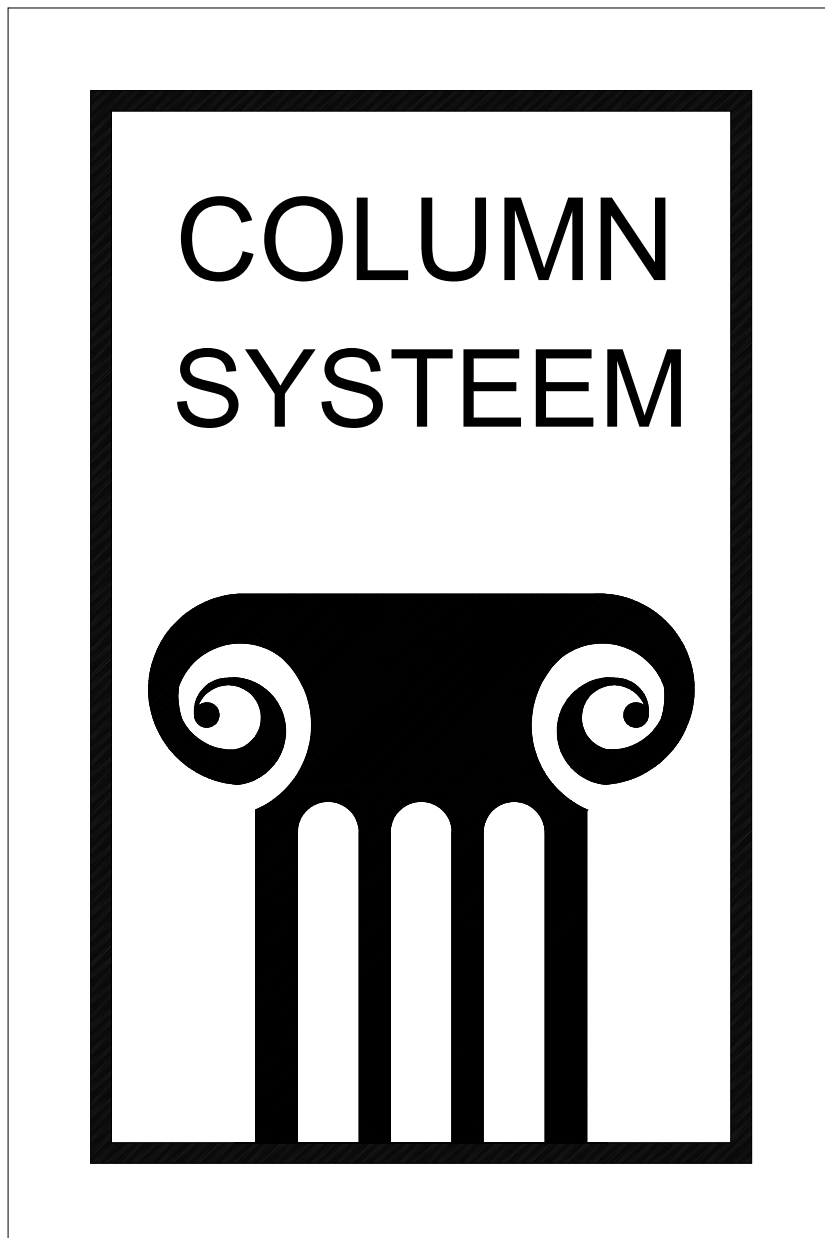


Mounting instruction



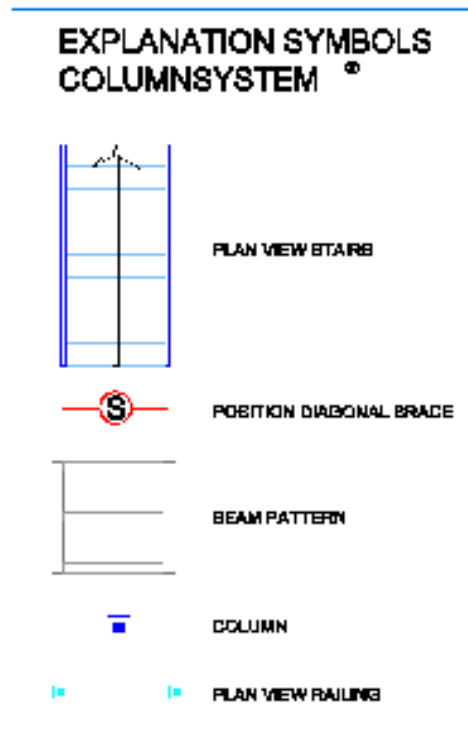
Index

- 1. Mounting sequence**
- 2. Explanation to the drawing of the steelconstruction**
- 3. Shoring method**
- 4. Explanation to the mounting of transverse plates**
- 5. Anchoring of columns**
- 6. Flooring**
- 7. Mounting of guard-rail**
- 8. Installation of the stairs**
- 9. Finishing**

1. Mounting sequence

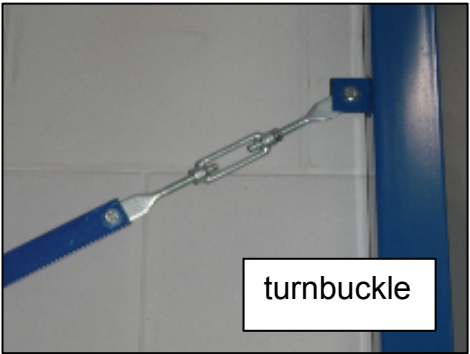
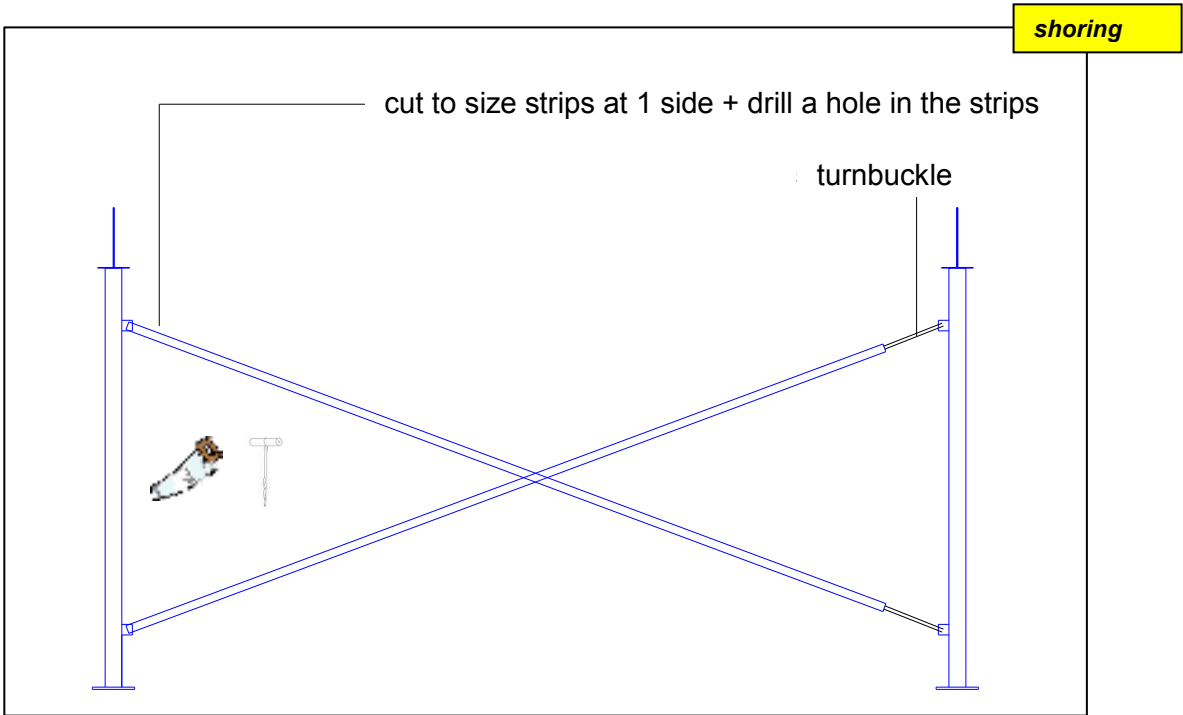
- **Move all delivered materials as much as possible to the working area**
- **Start mounting the transverse plates on the main beams**
- **Mount the main beams on the columns**
- **Mount secondary beams between the main beams**
- **Place the complete steelconstruction rectangular to the walls**
- **Place the columns water level and fix them to the floor**
- **Mount the diagonal bracings**
- **Place the flooring: Mount the floorplates row after row in grain direction**
- **Cut the floor at 170mm from the edge (were guard rail has to be installed)**
- **Mount the guard-rail and other accessories**
- **Stick the information plates clearly visible to the Construction**
- **Waste: *Profielnorm B.V. does not take away waste, unless otherwise specified. However, the fitters have to gather waste material to a central position.***

2. Explanation to the drawing of the steelconstruction

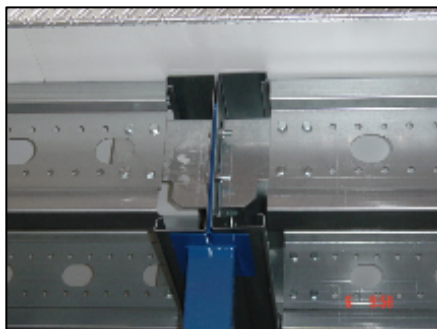
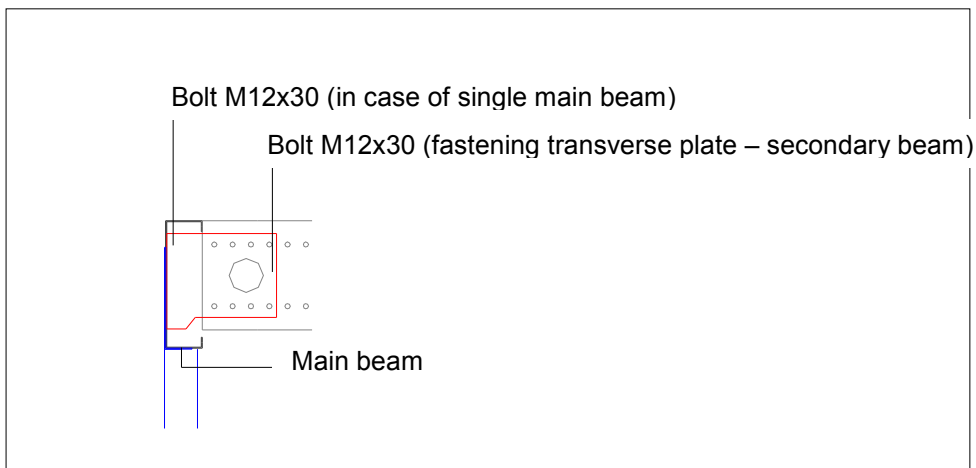
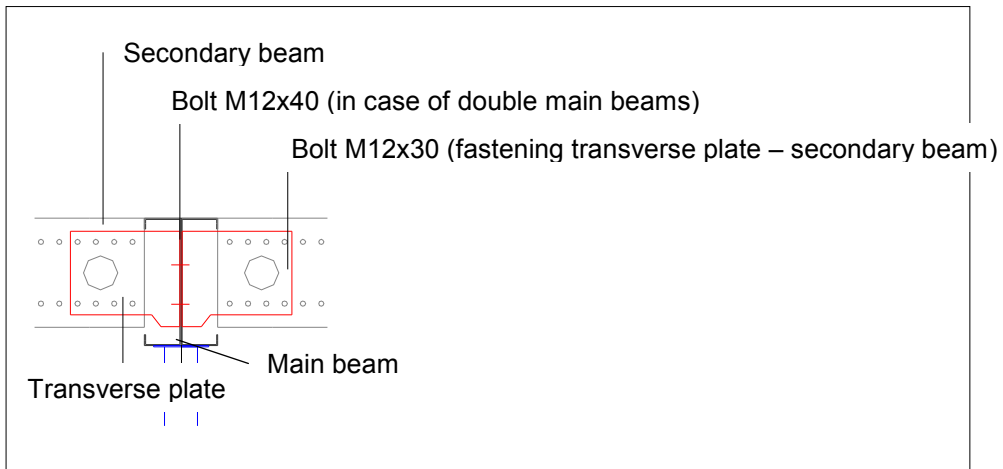


Drawing steelconstruction

3. Shoring method



4. Mounting transverse plates



Secondary beams with length > 4000mm have to be fastened with 4 bolts per transverse plate, beams with length <4000mm can be fastened with 2 bolts per transverse plate!

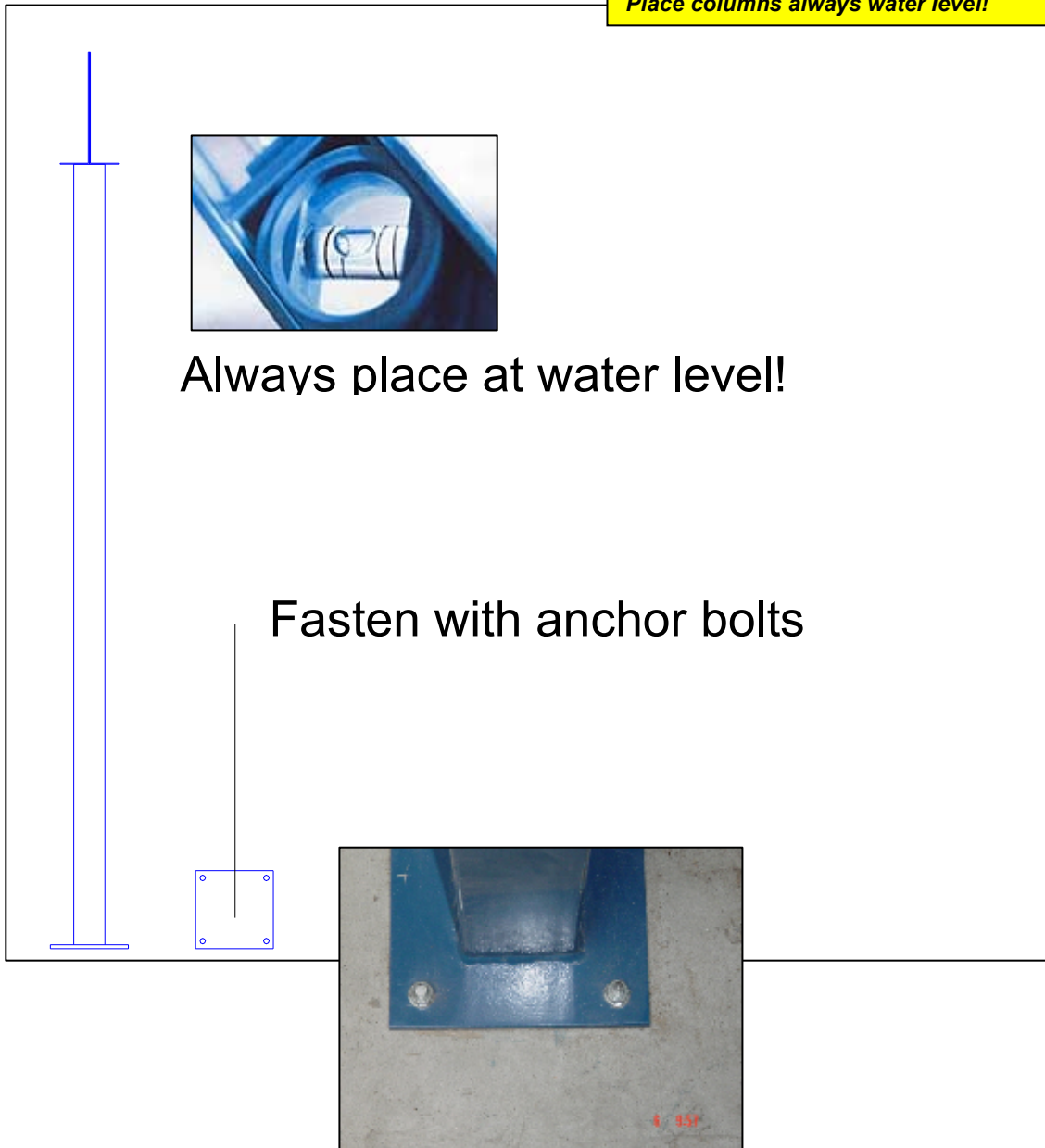
5. Anchoring of columns

Place columns always water level!



Always place at water level!

Fasten with anchor bolts

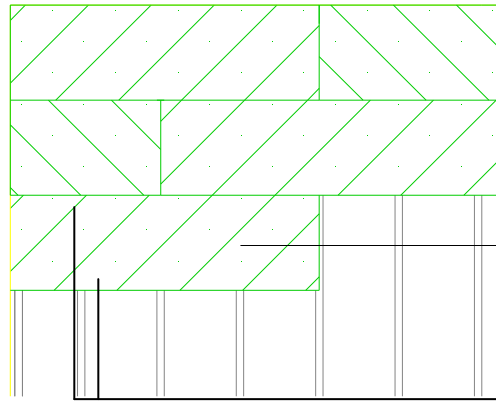


**BE AWARE OF PIPING AND CONDUIT OR
THREADED RODS IN THE CONCRETE!!**

6. Flooring

Flooring

ALWAYS PLACE IN SHIFTED PATTERN AND FIXED ON AT LEAST 3 SECONDARY BEAMS



Join flooring to the wall

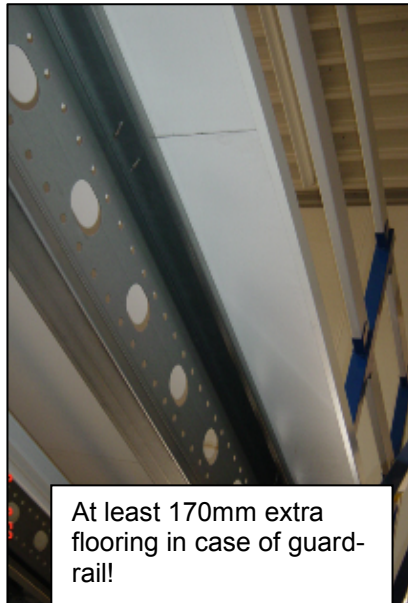
Fixing by groove and tongue!

Place in shifted pattern

Fixing floor-plates: fix the sides of each plate to each secondary beam!



No space between flooring and the walls, also around columns!



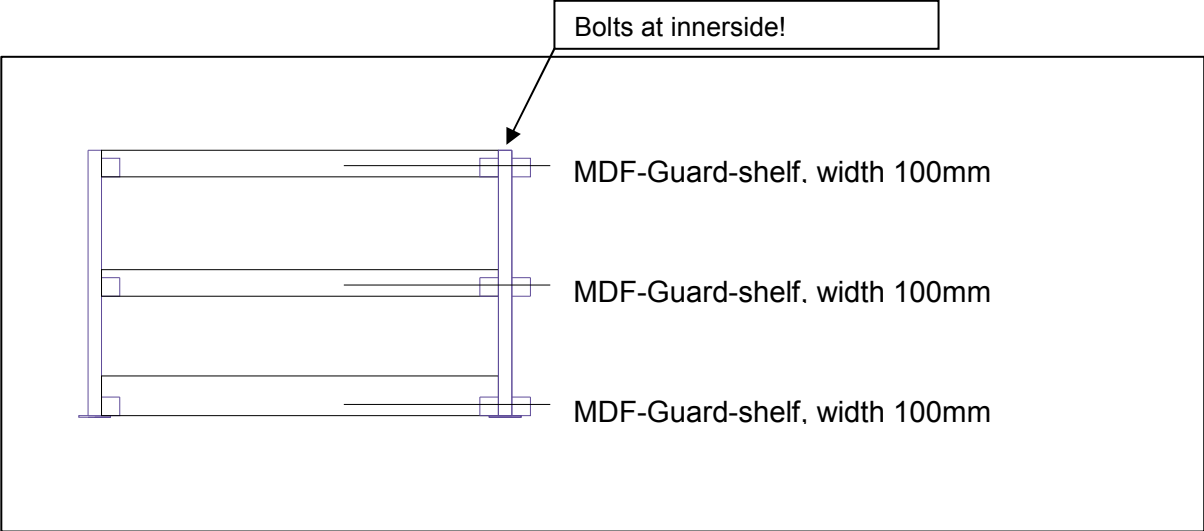
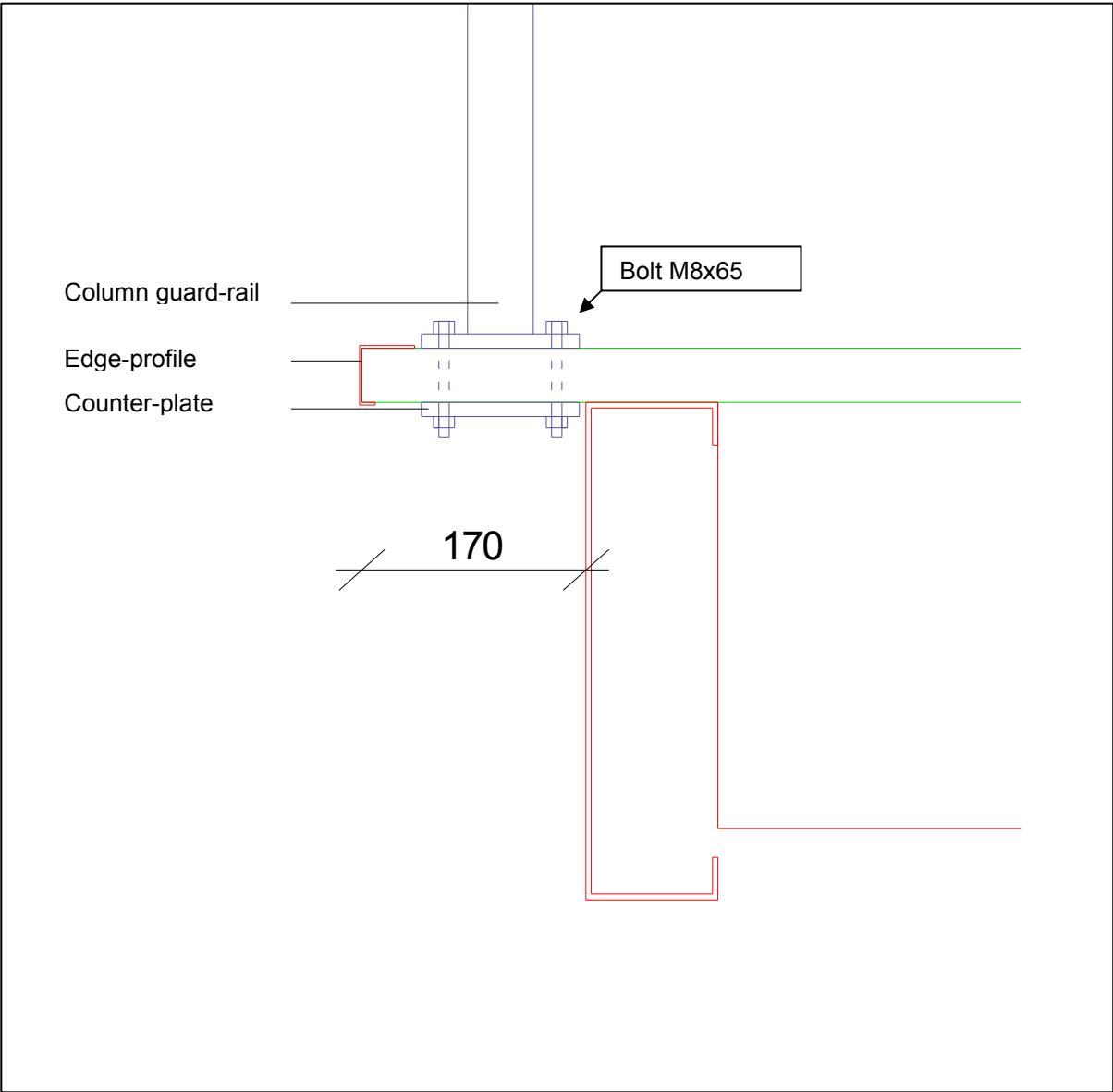
At least 170mm extra flooring in case of guard-rail!



Bolt M8x65 drilled through beam

At the top of the stairs flooring should be 10mm extra!

7. Mounting of guard-rail



8. Installation of the stairs



9. Finishing

