



Modula CC

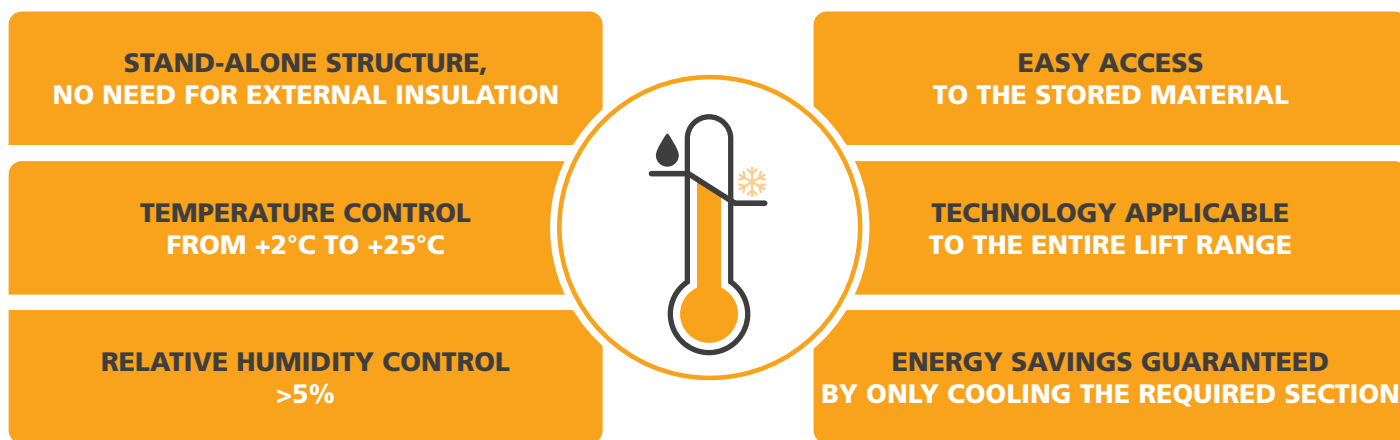
Think Vertical, Think Modula

MODULA CLIMATE CONTROL

All the advantages of Lift Technology with the benefit of temperature control

Modula Climate Control was designed to store materials that are **sensitive to temperature and humidity changes** and therefore require careful control of storage conditions to prevent deterioration.

By maintaining the advantages and functionalities of our standard Modula Lift automatic vertical storage system, we have expanded the range of possible applications, making its operation even more flexible.



PLUS ALL THE ADVANTAGES OF THE **LIFT** RANGE



1. SAVE SPACE



3. SAVE TIME



5. REDUCE RISKS



2. INCREASE SAFETY



4. IMPROVE EFFICIENCY



6. MANAGE YOUR INVENTORY

Components

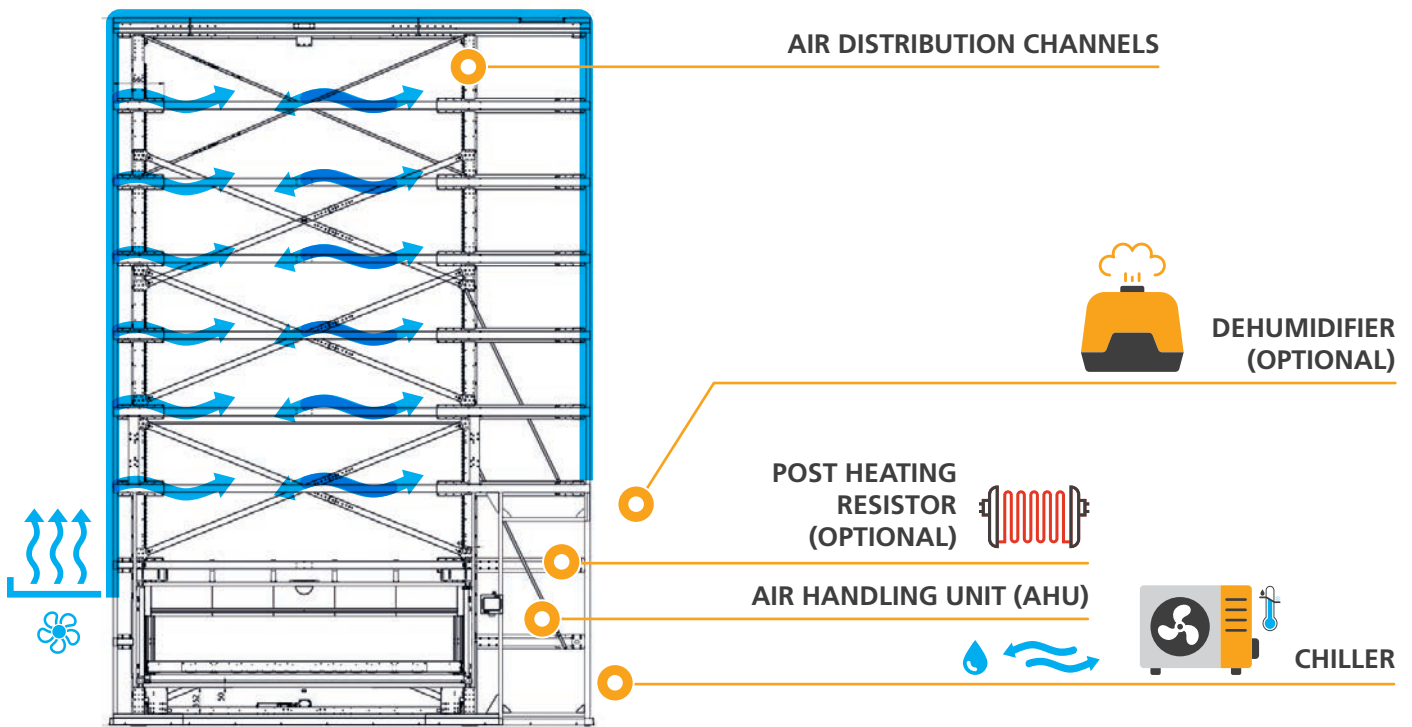
The optimal technical configuration is defined according to the required climatic storage conditions (Temperature/Relative Humidity) and the environment in which the storage system is installed. **The system is served by an external chiller** (typically the responsibility of the customer) which supplies the cold water necessary for temperature regulation.

In addition, the following are always present:

- **An insulation system** made of high-performance sandwich panel, fixed to the load-bearing structure of the Modula storage system, equipped with multiple airtight picking windows.
- **An air handling unit (AHU)** and relative air distribution channels.
- A control system.

Depending on the environmental conditions, the following may be necessary:

- A post-heating resistor package.
- A dehumidification unit.



TECHNICAL FEATURES	
HEIGHT from 4,100 mm to 14,400 mm	SPEED up to 120 cycles/hour (depending on the configuration)
HEIGHT INCREMENT 200 mm	USER INTERFACE 10.4" industrial grade touch screen console (Copilot)
PITCH 25 mm	TYPE OF BAYS internal
TRAY WIDTH from 1,500 mm to 4,100 mm	TEMPERATURE 2-25°C (+/-2°C)
TRAY DEPTH 654 mm and 857 mm	HUMIDITY > 5 (+/-2%)
TOTAL GROSS CAPACITY from 35,000 to 90,000 Kg depending on the model and configuration	<ul style="list-style-type: none"> • Automatic weight control upon the re-entry of each tray <ul style="list-style-type: none"> • Dynamic management of loading heights • Bearing structure made of galvanized steel • Management of trays with differentiated capacity
MAXIMUM HEIGHT OF STORABLE MATERIAL 695 mm (S bay)	

Fields of application

The **electronic, chemical, pharmaceutical, plastics and food industries** are those more in need of climate-controlled storage.

Whether we are talking about manufacturing or distribution companies, safety is a top priority in warehouse design and it is essential to keep products under strict control with reliable traceability methods.

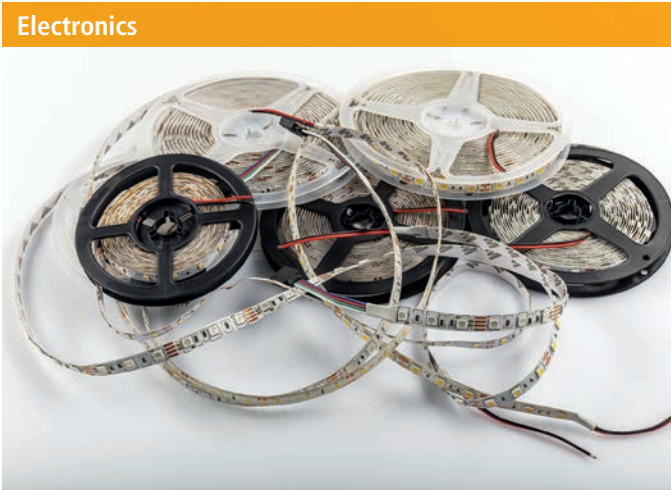
Food



Pharmaceutical



Electronics



Plastics

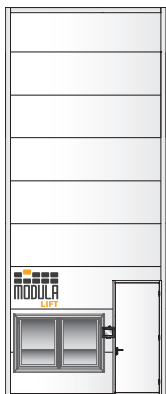




Our range of solutions


www.modula.com

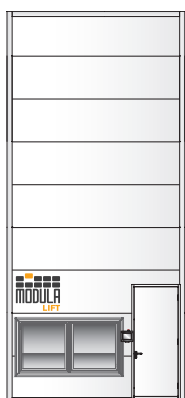
ME & ME-D



3750x2544 mm

Model	Tray width (mm)	Tray depth (mm)	Tray side height (mm)	Net tray capacity (kg)	Footprint dimensions with INTERNAL bay (W x D mm)
ME25	1.500	654	45 / 70 / 120	250	3750 x 2544
ME25D	1.500	857	45 / 70 / 120	250	4150 x 3153
ME50	1.500	654	70 / 120	500	3750 x 2544
ME50D	1.500	857	70 / 120	500	4150 x 3153
ME75	1.500	654	70 / 120	750	3750 x 2544
ME75D	1.500	857	70 / 120	750	4150 x 3153
ME1000	1.460	654	70 / 120	990	3750 x 2544
ME1000D	1.460	857	70 / 120	990	4150 x 3153

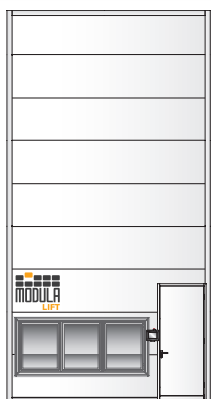
MA & MA-D



4150x2544 mm

Model	Tray width (mm)	Tray depth (mm)	Tray side height (mm)	Net tray capacity (kg)	Footprint dimensions with INTERNAL bay (W x D mm)
MA25	1.900	654	45 / 70 / 120	250	4150 x 2544
MA25D	1.900	857	45 / 70 / 120	250	4150 x 3153
MA50	1.900	654	70 / 120	500	4150 x 2544
MA50D	1.900	857	70 / 120	500	4150 x 3153
MA75	1.900	654	70 / 120	750	4150 x 2544
MA75D	1.900	857	70 / 120	750	4150 x 3153
MA1000	1.860	654	120	990	4150 x 2544
MA1000D	1.860	857	120	990	4150 x 3153

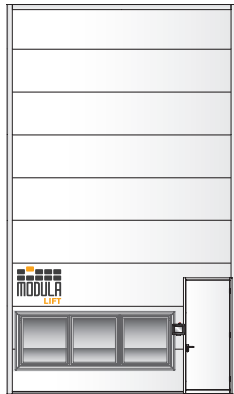
MC & MC-D



4750x2544 mm

Model	Tray width (mm)	Tray depth (mm)	Tray side height (mm)	Net tray capacity (kg)	Footprint dimensions with INTERNAL bay (W x D mm)
MC25	2.500	654	45 / 70 / 120	250	4750 x 2544
MC25D	2.500	857	45 / 70 / 120	250	4750 x 3153
MC50	2.500	654	70 / 120	500	4750 x 2544
MC50D	2.500	857	70 / 120	500	4750 x 3153
MC75	2.500	654	70 / 120	750	4750 x 2544
MC75D	2.500	857	70 / 120	750	4750 x 3153
MC1000	2.460	654	120	990	4750 x 2544
MC1000D	2.460	857	120	990	4750 x 3153

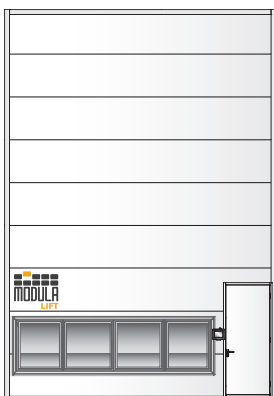
MX & MX-D



5350x2544 mm

Model	Tray width (mm)	Tray depth (mm)	Tray side height (mm)	Net tray capacity (kg)	Footprint dimensions with INTERNAL bay (W x D mm)
MX25	3.100	654	45 / 70 / 120	250	5350 x 2544
MX25D	3.100	857	45 / 70 / 120	250	5350 x 3153
MX50	3.100	654	70 / 120	500	5350 x 2544
MX50D	3.100	857	70 / 120	500	5350 x 3153
MX75	3.100	654	70 / 120	750	5350 x 2544
MX75D	3.100	857	120	750	5350 x 3153
MX1000	3.060	654	120	990	5350 x 2544
MX1000D	3.060	857	120	990	5350 x 3153

ML & ML-D



6350x2544 mm

Model	Tray width (mm)	Tray depth (mm)	Tray side height (mm)	Net tray capacity (kg)	Footprint dimensions with INTERNAL bay (W x D mm)
ML25	4.100	654	70 / 120	250	6350 x 2544
ML25D	4.100	857	70 / 120	250	6350 X 3153
ML50	4.100	654	120	500	6350 x 2544
ML50D	4.100	857	120	500	6350 X 3153
ML75	4.100	654	120	750	6350 x 2544
ML75D	4.100	857	120	750	6350 X 3153
ML1000	4.060	654	145	990	6350 x 2544
ML1000D	4.060	857	145	990	6350 X 3153



**OPERATOR
SAFETY AND
WELLBEING:
ERGONOMIC,
SAFE**



**MAXIMUM
CAPACITY OF
ALL TRAYS:
UP TO 990 KG FOR
EACH TRAY**



**OPERATOR
CONSOLE
(COPILOT):
INDUSTRIAL
GRADE 10.4 INCH
TOUCHSCREEN**



**MODULA WMS
SOFTWARE:
EVERYTHING
UNDER CONTROL**



**COMPATIBLE
WITH OPTIONAL
MODULA LIFT:
OPTIMIZED
PRODUCTIVITY**

Modula World



Modula is present in 5 continents with dealers and branches located in over 50 countries

MODULA S.p.A.

via San Lorenzo 41
Salvaterra di Casalgrande (RE)
Tel. +39 0522 774111
info@modula.com
www.modula.com



Hans Schourup A/S
Sletvej 2D
8310 Tranbjerg
Tlf. 8614 6244